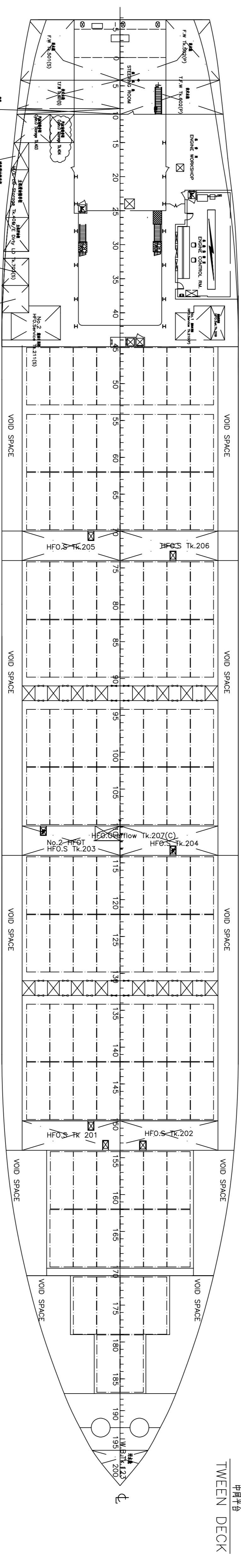
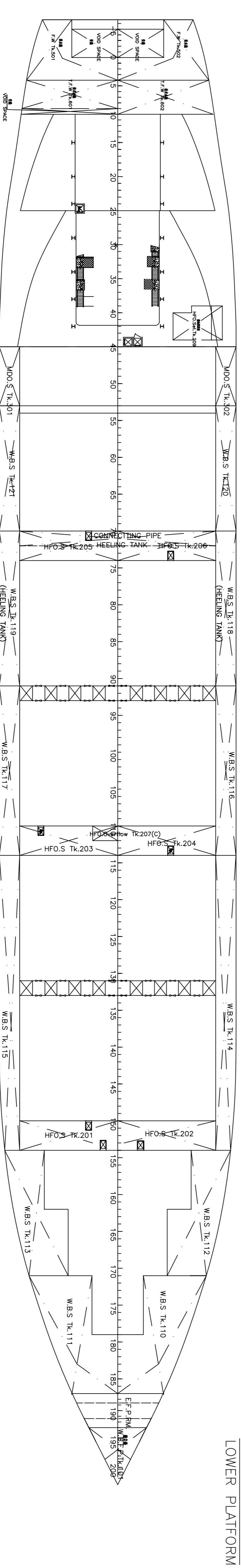


CAPACITY TABLE OF TANKS & HOLDS

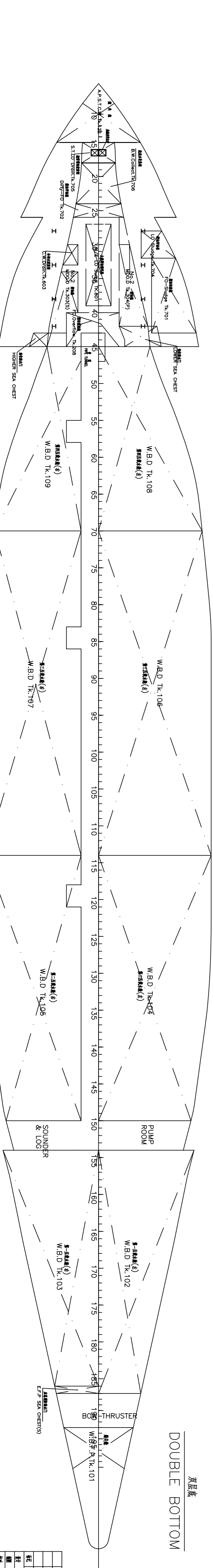
No.	NAME	POSITION (Frame num.)	CAPACITY (m ³)
CARGO SPACE:			
No.1	Cargo Hold	#154-#187	4750.8
No.2	Cargo Hold	#114-#150	7200.1
No.3	Cargo Hold	#74-#110	7711.5
No.4	Cargo Hold	#45-#70	4505.4
Total: 24467.8			
BALLAST WATER:			
#193-#208 (Genety: 1029/m ³)			
101	Free Peak TK(C)	#193-#208	260.4
102	No.02 Water Ballast TK(P)	#154-#187	345.5
103	No.03 Water Ballast TK(S)	#154-#186	337.6
110	No.110 Forward Water Ballast TK(S)	#170-#182	302.0
111	No.111 Forward Water Ballast TK(S)	#170-#186	298.3
112/113	No.112/113 Aft Water Ballast TK(P/S)	#154-#170	282.1
104	No.104 Water Ballast TK(P)	#114-#150	239.7
105	No.105 Water Ballast TK(S)	#114-#150	239.7
106	No.106 Water Ballast TK(P/S)	#70-#114	489.9
107	No.107 Water Ballast TK(S)	#70-#114	489.9
114/115	No.114/115 Water Ballast TK(P/S)	#114-#150	753.1
108	No.108 Water Ballast TK(P)	#70-#114	358.2
109	No.109 Water Ballast TK(S)	#70-#114	358.2
118/119	No.118/119 Aft Water Ballast TK(P/S)	#91-#114	358.2
116/117	No.116/117 Forward Water Ballast TK(P/S)	#91-#114	358.2
107	No.107 Water Ballast TK(S)	#70-#114	358.2
108	No.108 Water Ballast TK(P)	#45-#70	331.8
109	No.109 Water Ballast TK(S)	#45-#70	273.88
120/121	No.120/121 Water Ballast TK(P/S)	#45-#70	338.5
601	Trim Water TK(S)	#4-#10	120.1
602	Trim Water TK(S)	#4-#10	98.53
Total: 8000.96			
FUEL OIL:			
#150-#154 (Genety: 0.97/m ³)			
202/201	No.202/201 Heavy Fuel Oil TK (P/S)	#150-#154	207.7
204	No.204 Heavy Fuel Oil TK (P)	#110-#114	230.5
203	No.203 Heavy Fuel Oil TK (S)	#110-#114	274.0
206/205	No.206/205 Heavy Fuel Oil TK (P/S)	#70-#114	255.9
207	Heavy Fuel Oil Overflow TK	#110-#112	16.53
202	Heavy Fuel Oil Settling Tank	#40-#44	51.45
208	No.208 Fuel Oil Settling Tank	#39-#44	58.95
209	No.209 Fuel Oil Settling Tank	#39-#44	59.82
210	No.210 Fuel Oil Service Tank	#39-#44	30.82
211	No.211 Fuel Oil Service Tank	#39-#44	43.45
702	Dirty Fuel Oil Tank	#24-#26	11.74
701	Fuel Oil Sludge Tank	#34-#43	44.94
Total: 1729.48			
DIESEL OIL:			
#45-#53 (Genety: 0.86/m ³)			
302/201	No.302/201 Diesel Oil Tank (P/S)	#45-#53	83.35
304	No.304 Diesel Oil Tank (P)	#30-#44	19.89
303	No.303 Diesel Oil Tank (S)	#34-#43	16.85
305	Diesel Oil Settling Tank	#32-#36	15.21
306	Diesel Service Oil Tank	#36-#40	15.25
Total: 234.7			
LUB-OIL:			
Genety: 0.98/m ³			
401	L/E Lub Oil Storage TK(S)	#19-#25	32.79
402	O/E Lub Oil Storage TK(S)	#15-#19	17.48
403	CRUISE OIL STORAGE TK(C)	#10-#15	40.02
404	CRUISE OIL STORAGE TK(S)	#10-#15	12.74
703	W/E Dry Lub. Tank(S)	#26-#31	24.73
704	Lub.Oil Sludge TK(P)	#27-#32	7.24
705	Tube Lub.Oil Drainage TK(C)	#15-#18	7.81
Total: 164.64			
Fresh Water (P/S)			
Genety: 1.000/m ³			
502/501	Fresh Water TK(S)	STERN-#4	153.17
Total: 306.34			
MISCELLANEOUS:			
603	Cooling Water Storage Tank(C)	#30-#33	2.98
706	BIGE WATER COLLECTING TK(C)	#18-#24	28.01
122	AP-STEERN TUBE COOLING WK(C)	STERN-#15	4.12
123	DIRTY WATER TK	#197-STEM	52.11



中層甲板
TWEEN DECK



下層甲板
LOWER PLATFORM



双层底
DOUBLE BOTTOM

规格表			SPECIFICATION		
名称	规格	数量	名称	规格	数量
容积表	OME CS001-103.001B	1	容积表	OME CS001-103.001B	1
储罐容量表	TANKS CAPACITY PLAN	1	储罐容量表	TANKS CAPACITY PLAN	1
设计	设计	设计	设计	设计	设计
审核	审核	审核	审核	审核	审核
批准	批准	批准	批准	批准	批准
日期	2020.03.15		日期	2020.03.15	
设计	设计	设计	设计	设计	设计
审核	审核	审核	审核	审核	审核
批准	批准	批准	批准	批准	批准
日期	2020.03.15		日期	2020.03.15	