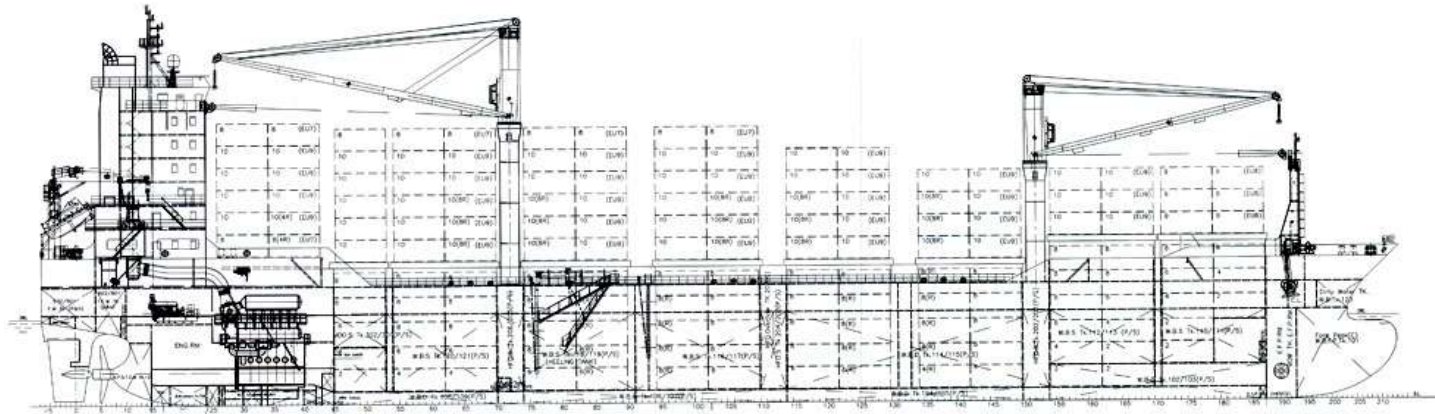




Hermann Lohmann Reedereien
GmbH & Co. KG
Ship Management



Name Victoria L
Shipyard SHANDONG PROVINCE WEIHEI SHIPYARD, CHINA
Built 05.2009
Type CONTAINER – GEARED – ENGINE / BRIDGE AFT

Classification GL +100 A5 E3, IW, BWM-F, CONTAINERSHIP + MC
 AUT E3 EQUIPPED FOR CARRIAGE OF DANGEROUS
 GOODS (SOLAS II-2, REG. 19)

Main Dimensions

Length over all 161,35 m
 Length between perpendiculars 151,00 m
 Breadth moulded 25,00 m
 Draught moulded 10,15 m
 Air Draught (incl. draught) 39,20 m
 Depth to maindeck moulded 13,90 m

Deadweight (about) 17666 dwat

Measurement

GT/NT 15633 / 6717

Service-Speed (bft 2, even keel) 19,00 kts

Main Engine

2 STROKE MAN B&W 6S60MC-C – 13.560 kW

Propeller Fixed

Consumption at sea fully laden abt 48,50 mts / 19 kn

Consumption in port day idle

- IDLE, NO CRANES, NO REEFERS :abt 3,80 MT
- TWO CRANES WORKING, NO REEFERS :abt 5,50 MT
- TWO CRANES WORKING, 50 REEFERS :abt 8,40 MT
- TWO CRANES WORKING, 100 REEFERS: :abt 11,20 MT
- NO CRANES WORKING, 100 REEFERS :abt 9,50 MT
- TWO CRANES WORKING, 250 REEFERS: :abt 25,00 MT

- NO CRANES WORKING, 250 REEFERS :abt 20,78 MT

Auxiliary engines

3 x Diesel Gen. Sets, each 1120 kW
 1 x Diesel Gen. Set, 250 kW
 Bowthruster abt. 800 kW
 258 Reefer plugs wereof 126 in hold and 132 on deck, 440/32A/60 Cycles

Cranes:

2 MacGregor Cranes (located midships) each 40 mt SWL
 No 1 max 28m outreach
 No 2 max 35m outreach
 Hoisting speed: variable up to 34m /min with SWL 18 mt for quick & fast operation.

Tank capacities:

Ballast 7000 m³
 LFO 1600 m³
 MGO 150 m³
 Potable water 300 m³

Cargo capacity

4 Holds divided in 8 Compartments / 8 Hatches with 16 Hatchcovers
 Hatch no 1: 12,48 m x 15,88 m
 Hatch no 2-7: 12,48 m x 20,56 m
 Hatch no 8: 6,56 m x 20,56 m

Pontoon type hatch covers. Hatch covers are longitudinally divided for non-sequential opening and bay-wise operation.
 Max weight of hatch cover: abt. 31 mt

Container intake acc. To IMO Reg.(8'/8'6"):

Pos / Size	20'	40'	+20'
Deck	876	337	58
Hold	492	226	40
Total	1368	563	98

Container Stackweights (mt)

Pos / Size	20'	40'
Hatch covers	60	120
Hatch covers	60	104
Poopdeck	70	120
Tanktop	120	150

Over Sizes Containers:

Vessel is equipped for 45' containers and wide bodies on deck on top of 40' containers in accordance with the onboard manual for stowage/lashing of containers approved by class.

All above container intakes are max. intakes always subject to vessels stability / trim / Deadweight / Perm. Stress / Perm. Stackweights, ContainerLashing plan and Deadweight / Bunkers on board and IMO Regulations of visibility. Panama and Suez Canal or other local regulations may also require other visibility angle decreasing intakes.

Fittings:

Fully Cellularized in Holds

Details are given in good faith, believed to be correct, but without guarantee. All figures to read "about" and not to be used for T/C-descriptions Speed basis max. beaufort 2, no swell and no adverse currents. Any Days during which the vessel encounters conditions exceeding these weather conditions are expressly excluded regarding performance evaluation.