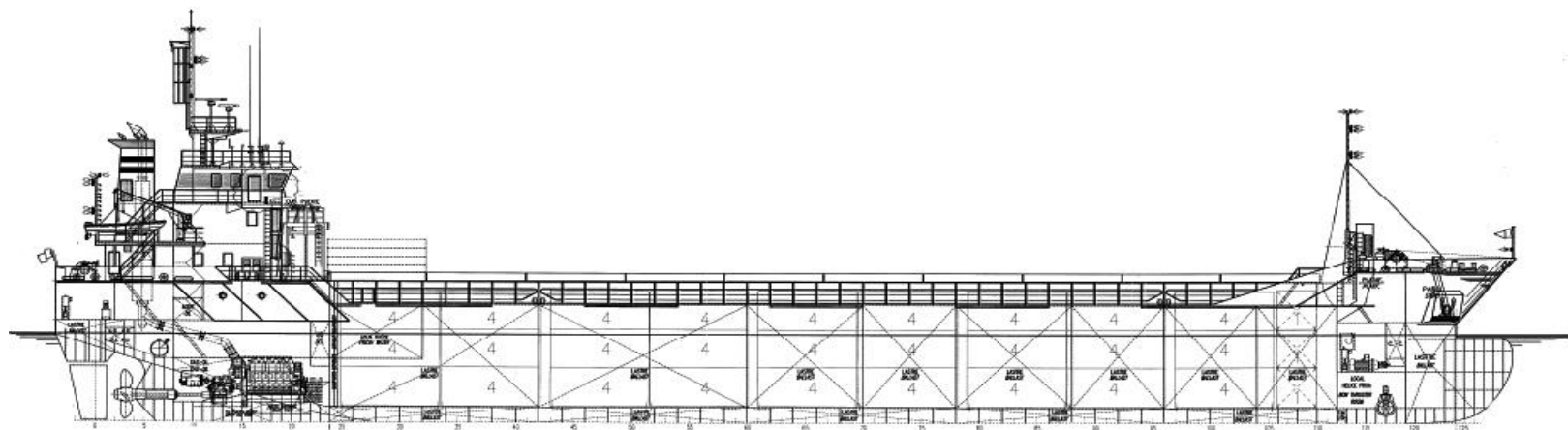




Hermann Lohmann Bereederungen
GmbH & Co. KG
Ship Management



Name Nelli
Flag Cyprus
Shipyard Factoria Naval de Marin, S.A, Marin, Spain
Built 2009
Type General Cargo Ship
Classification DNV GL + 100 A5 IW/DBC + MC AUT strengthened for heavy cargo, equipped for carriage of containers

Main Dimensions

Length over all	89,50	m
Length between perpendiculars	83,40	m
Breadth moulded	13,70	m
Air Draught (incl. draught)	24,00	m
Depth to maindeck moulded	7,35	m
Clear height in hold	8,43	m

Deadweight

at 6,00 m draught (summer)	4672,0	dwt
at m draught (winter)		dwt

Measurement

GT/NT	2956 / 1558
-------	-------------

Service-Speed (bft 2, even keel)

10,5	kts
------	-----

Main Engine

1 MaK 6M25	1850	kW
------------	------	----

Propeller

CPP

Consumption at sea MGO/day fully laden

7,0	mts
-----	-----

Consumption in port MGO/day idle

0,5	mts
-----	-----

Auxiliary engines

2 x Caterpillar, 229 kW
 1 x Shaft generator

2 Separators: 1x IFO, 1x Luboil
 1 Fuel oil trim pump
 1 bilge water separator, acc. to Marpol regulations
 2 bilge/ballast pumps, each 150 m³/hr a 2,80 bar
 1 Fire Fighting pump
 1 sewage pump
 1 freshwater pressure set
 1 CO₂ Fire Fighting system for engine room and cargo hold

Bowthruster

Kw

Tank capacities

Ballast	1793,00	m ³
Fuel	286,00	m ³
Potable water	55,00	m ³

Cargo capacity

Hold 1	61,71 x 10,98 x 8,40m	5615,00	cbm Bh.
--------	-----------------------	---------	---------

Container Capacities

	20' or 40' + 20'
Hold	111 / 48 / 15
Deck	No fittings on deck
TEU at 14 mt	111
Reeferplugs	No
Stackload	20' / 40'
Tanktop	72 t / 91,5 t

Weather deck hatch covers

Hold 1	63 x 11,70 m	10	Panels
--------	--------------	----	--------

Max. Load /m2 on tanktop	12 t
--------------------------	------

Max. Load /m2 on hatchcover	3,20 t
-----------------------------	--------

Steering Gear

Electrical hydraulic steering gear

Anchor and moving winches

1 electrical driven bow anchor winch with two warping heads
 1 electrical driven capstan aft

Deck layout

Rudder, Becker type
 Lashing eyes in hold and outside of coaming
 Folding Fore Mast

Communication equipment

According GMDSS for Area A3, GSM, LTE, Vsat

Details are given in good faith, believed to be correct, but without guarantee. All figures to read "about" and not to be used for T/C-descriptions Speed basis max. beaufort 2, no swell and no adverse currents. Any Days during which the vessel encounters conditions exceeding these weather conditions are expressively excluded regarding performance evaluation.